



Class Newsletter

Year 6

Summer 2021

I hope you all had a great Easter holiday. This is an important term as we continue to prepare for the transition to secondary school.

Homework

Homework is set on a Monday on Google Classroom and is due in on Sunday at 5pm.

Homework consists of:

- *A maths activity*
- *A Grammar activity*
- *A reading comprehension*
- *A fluency text to practise*

Take-Away Homework

I was incredibly impressed by the effort many children made, last term, with their take-away homework. The children really enjoyed sharing their work with others. This term the take-away homework is based on the transition to secondary school and is called 'New Beginnings'. The take-away menu and letter will provide more information on this.

SATS

The SATS tests will not be happening this year. Teacher Assessment will be reported at the end of the year as usual.

Spellings

Spellings will continue to follow the same structure as last term. 10 spellings will be learnt each week. These will be set on Spelling Shed. All children have their logins but if they forget these then please let me know. The new spelling pattern will be taught at the beginning of the week and children will be able to play games

Reading

Books are changed as and when necessary. Please ensure your child brings their reading record to school every day, indicating the reading they have done during the week.

Full stops- Monday

Question marks- Tuesday

Exclamation marks- Wednesday

Commas- Thursday

Apostrophes- Friday

English

In English this term we will focus on the following themes:

- *Consolidating key skills in reading*
- *Revising important grammar terms*
- *Writing a range of non-fiction and fiction pieces, using appropriate features and vocabulary*

Please look at the links on the website that are useful revision



Discovery Curriculum

We will be continuing with our Extreme Earth topic before starting our new topic. Many of the Foundation subjects will be linked to this topic and the learning will include :

Exploring the Earth's climates.

Extreme weather phenomena.

Natural disasters.

Creating art work related to extreme weather.

After completing the work on Extreme Earth, we will be focussing on the play and creating scenery, props and merchandise to sell.

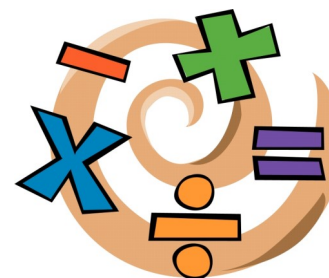
PE

PE will continue to be on Thursday afternoons. Please ensure PE kits are in school every Thursday. PE is a compulsory part of the school curriculum and your child MUST have a letter if they are unable to participate in this subject.

Maths

In Maths we will cover many areas including:

- *Developing confidence in solving a range of word problems.*
- *Developing arithmetic skills*
- *Further enhancing use of written methods*
- *Developing confidence in solving a range of calculations.*
- *Please encourage your child to use the link on the website (SATS Booster) to continue to revise.*



Thank you for taking the time to read this newsletter. Please let me know if you have any afternoons free that you would like to come in and hear some readers. If you have anything that you would like to discuss, please book an appointment through the school office.

Mrs L. Boot